



RATHOD

Brass Components

AN ISO 9001 : 2015 CERTIFIED COMPANY

PRODUCT BOOK



About Us



Rathod Brass Components was formerly known as ADR Group of companies, a pioneer name in the field of Brass Electrical Components, supplying to all major domestic players and exporters. Rathod Brass Components was established in 2009 with an aim of fulfilling the demands of overseas market. A destination, where precision, perfection and commitment towards the customers are met. Rathod Brass Components is a leading manufacturer, exporter and supplier of precision Electrical Brass Components. Our products comprise of Lamp Holder Parts, Brass Terminal Blocks, Brass Plug Pin parts, Brass Ground Blocks, Brass Electrical Lightening Accessories and all other Precision Brass Components.

Rathod Brass Components is well equipped with good blend of experienced team and state of the art manufacturing plant and classy infrastructure, under the Able guidance of people having experience of over two and a half decades.

Since 2009 Rathod Brass Components and ADR Group for nearly 23 years, have been constantly putting their best foot ahead in the industry of Brass Components for numerous applications. Being a member of the Jamnagar Owners Association, we exercise transparent trade practices and design of products confirming the various international standards.

With its export market targeted specially Europe, UK, USA, and Middle East Countries, Rathod Brass Components is flourishing in every sphere of its activity. Rathod Brass Components can produce 15 tons of different Brass Components in a month with assured quality.

QUALITY ASSURANCE

Being a quality oriented organization, our slogan is; "Never Receive, Never produce and Never send a Defective Component". We strive hard to offer non-defective components. Rathod Brass Components has employed efficient quality controllers. Moreover, our total quality management system Implemented in such a way that only flawless products passes through for the dispatch.

- Improving operational efficiency
- Getting customers' perception & taking corrective action
- Implementing management system of international repute & continually improve its effectiveness
- Monitoring the delivery & quality performance of supplier.



www.rathodbrass.in



Our Portfolio



Brass Switchgear parts



Brass Automobile parts



Brass Riveting parts

www.rathodbrass.in

Our Portfolio



Brass Meter parts



Brass Precision parts



Brass Lamp Holder parts

www.rathodbrass.in

Our Portfolio



Brass Plug Pin parts



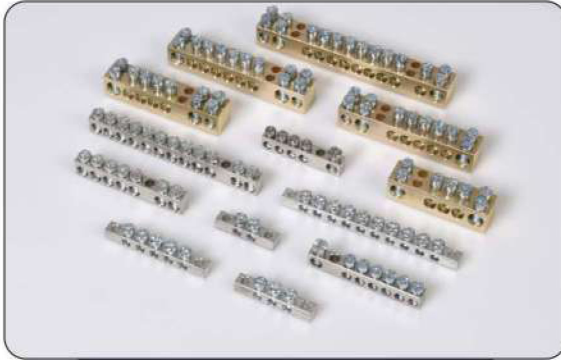
Brass Moulding parts



Brass Connector parts

www.rathodbrass.in

Our Portfolio



Brass Neutral Links



Brass & MS Fastners

www.rathodbrass.in

Our Mission



To Provide variety of engineering components using world class technologies and get 100% satisfaction in every are of business from product development to after sales services.

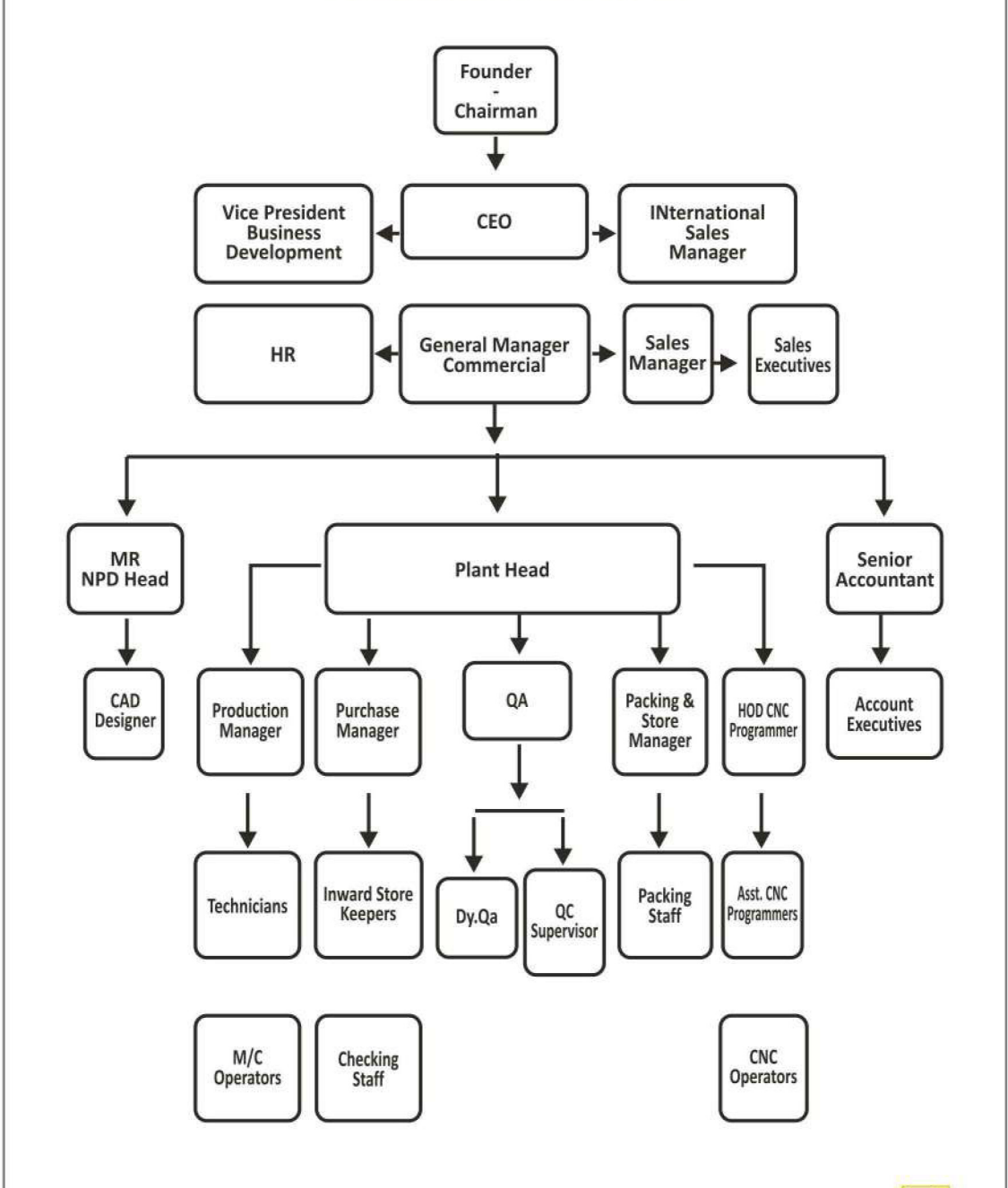
Our Vision



To be recognised as an leading industrialist in manufacturing World class assemblies and Fittings.

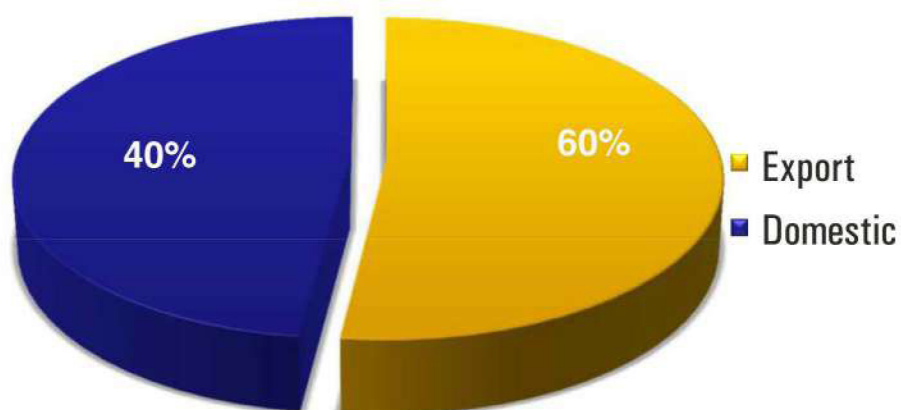
www.rathodbrass.in

Organisation Chart



Sales Bifurcation in Detail

Export & Domestic Sales Report

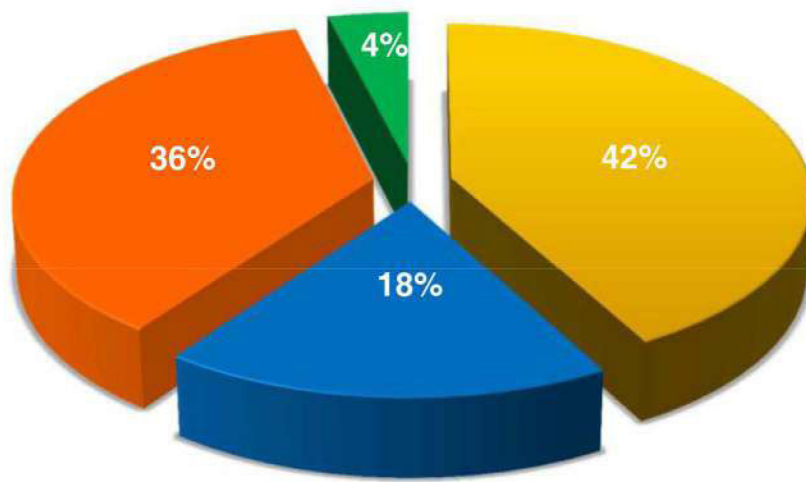


Exporting Countries

**UK
USA
ITALY
Germany
Saudi Arabia
Dubai**

www.rathodbrass.in

Segment wise Share of Business



■ Brass Electrical Switch Part

■ Custom Brass Turned Components

■ Brass Lamp Holder Parts

■ Brass Fastners

www.rathodbrass.in

Quality Policy

Our target is to provide zero defects products to client which is remarkable in industry. To meet the global demand we take care at every stage right from raw material purchase to finished goods. Our quality assurance team is trained and well experienced. To achieve the maximum standard our quality control team continuously monitors the products and user requirement right from the production stage up to the final dispatch. Due to strict quality control procedures our customers are ensured that their requirements are met accurately and consistency each & every piece is inspected under strict quality control manuals.



Key points to our quality control:

- Quality Planning
- Test Equipments & Trainings
- In-Process & Inter-Process Inspections
- Equipment Calibration & Maintenance
- Up-to-date records of quality standards
- Dedicated Design & Development Department
- Design & Development as per Custom Specification
- 100% Visual Inspection to ensure 100% visual defect free products



Manufacturing Capabilities



www.rathodbrass.in

Manufacturing Capabilities



www.rathodbrass.in

Manufacturing Capabilities



www.rathodbrass.in

Thank You



Thanks for being with us.
We Look forward to be a Strategic Partner,
and want to have a growing
Business Relations with You



RATHOD
Brass Components

Plot No.31/3, Nr. BSNL Godown, Hapa Industrial Area,
Hapa, Jamnagar - 361120 (Gujarat) INDIA

Contact No.
+91-9898296575

Website : www.rathodbrass.in
Email : info@rathodbrass.in